

2018 KS2 School Dashboard

for governors & school leaders

Produce custom dashboards
at fftaspire.org

Sheering Church of England Voluntary Controlled Primary School

LA Essex DFE 8813131 Produced January 2019 Version 2

What it is

Seven easy-to-use reports that help governors and school leaders to evaluate school performance using the latest 2018 DFE school performance indicators.

What it tells you

- What are the strengths and areas for improvement in your school?
- How does attainment and pupil progress compare to the national average over the last three years?
- How are you performing in different subjects?
- Do you have any under-performing groups of pupils?
- How might the context of your school affect performance?
- How does pupil attendance compare to the national average?

About the data shown

1 2 3

Actual results

Actual results for your school, using a range of measures such as averages and thresholds.



Gauges

These display headline indicators and whether actual results and pupils' progress are in line with, or significantly above or below, the national average.

ESTIMATED



1 2 3

Pupil progress

The value added progress that your pupils have made from one key stage to the next. FFT compares your actual results to the estimated results based on the progress of similar pupils nationally.



Statistical significance

Green plus signs and red minus signs highlight where either actual results or pupils' progress is significantly above or below the national average.



Trends

The dashboard analyses school performance over 3-5 years. Any significant year-on-year improvement is highlighted using an up arrow. Significant declines in performance are highlighted with a down arrow.



Strengths & weaknesses

These highlight key pupil groups and subjects where progress is above or below the national average.

Working in partnership with



Data sources

Generated from FFT Aspire which includes data sourced from the DfE (National Pupil Database) and data calculated by FFT. FFT is accredited as a DfE supplier to receive early access to ASP data. Headline performance indicators will be consistent with the DfE School Performance Tables and ASP.

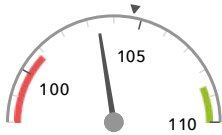
Overview

KS2 Attainment 2018 · Actual results

15 pupils

Average Scaled Score (Re, Ma)

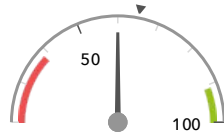
103.4



In line with the national average (104.7) ◀

% Expected standard+ (Re, Wr, Ma)

60%



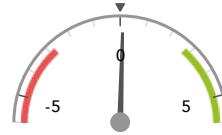
In line with the national average (65%) ◀

KS2 Progress 2018 · Value Added

15 matched pupils

Average Scaled Score (Re, Ma)

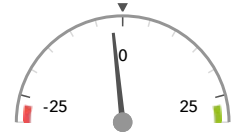
+0.1



In line with the national average (0) ◀

% Expected standard+ (Re, Wr, Ma)

-2%



In line with the national average (0%) ◀

KS2 higher and lower performing pupil groups 2018

	Higher performing	Lower performing
Overall achievement pupil progress	Male (11) ↑ Autumn Term (6) Summer Term (6)	No SEN (9) Middle attainers (9)
KS2 reading achievement pupil progress	Summer Term (6) Autumn Term (6) Male (11)	No SEN (9) Middle attainers (9)
KS2 writing achievement pupil progress	No SEN (9) Autumn Term (6) Not FSM (ever) (14)	
KS2 mathematics achievement pupil progress	Male (11) Autumn Term (6)	Summer Term (6) First language English (15) Joined before Y5 (15)
KS2 grammar, punctuation & spelling achievement pupil progress	Summer Term (6) Male (11) Not FSM (ever) (14)	No SEN (9)

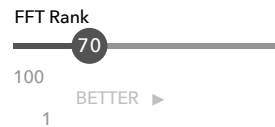
Attainment & progress

KS2 Attainment 2018

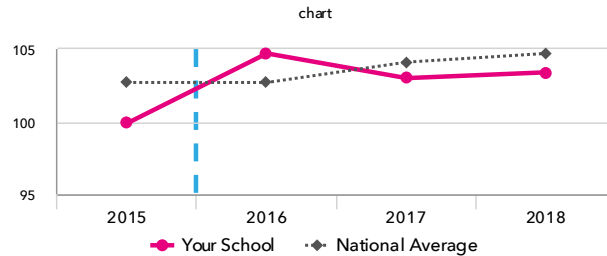
15 pupils

Average Scaled Score (Re, Ma)

103.4



In line with the national average
(104.7)

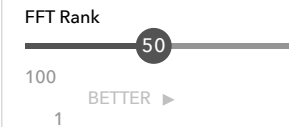


KS2 Progress 2018

15 matched pupils

Average Scaled Score (Re, Ma)

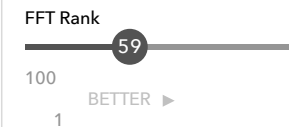
+0.1



In line with the national average (0)

% Expected standard+ (Re, Wr, Ma)

-2%



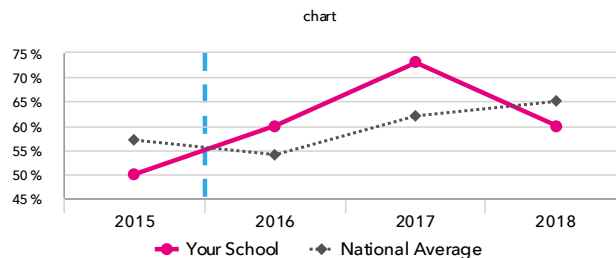
In line with the national average
(0%)

% Expected standard+ (Re, Wr, Ma)

60%



In line with the national average
(65%)



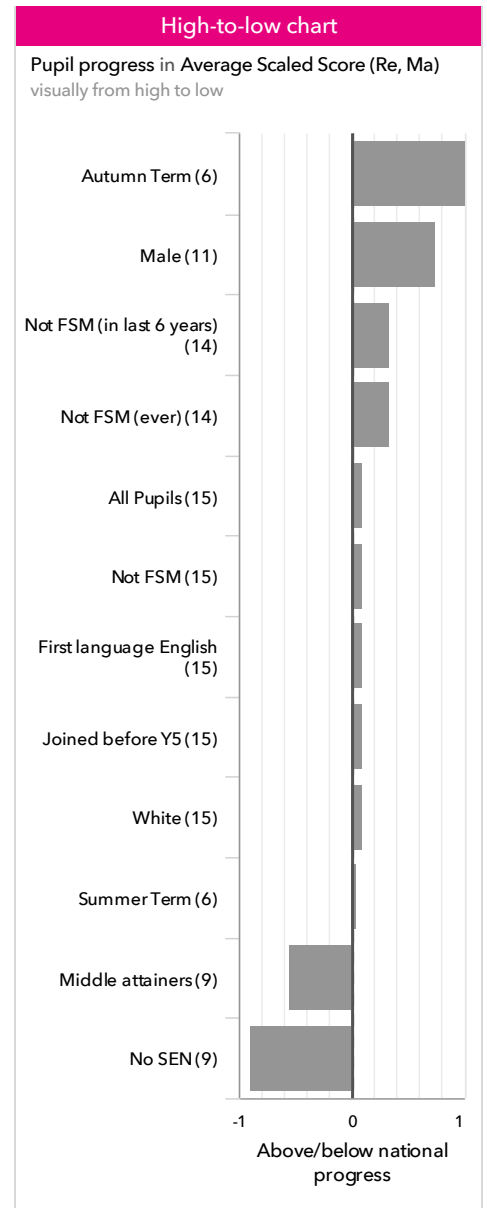
KS2 performance summary

	Actual results			Pupil progress		
	2016	2017	2018	2016	2017	2018
Number of Pupils / % Matched	15	15	15	100%	93%	100%
% Expected standard+ (Re, Wr, Ma)	60%	73%	60%	+8%	-3%	-2%
% Higher standard (Re, Wr, Ma)	7%	0%	7%	+3%	-5%	+1%
Average Scaled Score (Re, GPS, Ma)	105.6	103.7	103.7	+4.2 +	-2.6 ↓	+0.3 ↑
Average Scaled Score (Re, Ma)	104.7 ↑	103.0	103.4	+3.5 +	-2.9 ↓	+0.1
% Expected standard+ Reading	73%	80%	87%	+10%	-6%	+13%
% Higher standard Reading	13%	13%	13%	-3%	-11%	-10%
Scaled Score Reading	103.3 ↑	103.4	104.5	+2.2	-2.7 ↓	+0.8
% Expected standard+ Writing	80%	80%	73%	+9%	-13%	-1%
% Higher standard Writing	40% +	33%	33%	+28% +	+11%	+20% +
Scaled Score Writing	104.6	103.9	103.1	+4.9 +	-0.3 ↓	+2.1
% Expected standard+ Maths	93%	87%	87%	+24%	-1%	+8%
% Higher standard Maths	27%	0%	13%	+11%	-22%	-6%
Scaled Score Maths	106.1	102.5	102.3	+4.5 +	-3.1 ↓	-0.6
% Expected standard+ Grammar, Punctuation & Spelling	80%	93%	93%	+10%	+0%	+19%
% Higher standard Grammar, Punctuation & Spelling	47% +	20%	13%	+26% +	-22%	-14%
Scaled Score Grammar, Punctuation & Spelling	106.8	106.3	105.8	+4.7 +	-1.6 ↓	+1.3
% Expected standard+ Science	100%	100%	100%	-	-	-

Pupil groups

KS2 Pupil groups performance 2018

	Pupils	Actual results			Pupil progress			
		Average Scaled Score (Re, Ma)	% Expected standard+ (Re, Wr, Ma)	% Higher standard (Re, Wr, Ma)	Average Scaled Score (Re, Ma)	% Expected standard+ (Re, Wr, Ma)	% Higher standard (Re, Wr, Ma)	
Summary	All Pupils	15	103.4	60%	7%	+0.1	-2%	+1%
Gender	Male	11	102.2	45%	0%	+0.7 ↑	-6%	-3%
	Female	4	106.6	100%	25%	-1.7	+10%	+13%
DFE Prior Attainment	Higher attainers	4	107.8	100%	25%	-1.2	+7%	+8%
	Middle attainers	9	102.6	56%	0%	-0.5	-4%	-2%
	Lower attainers	2	98.3	0%	0%	+5.5	-10%	-0%
Pupil Premium	FSM (in last 6 years)	1	100.5	100%	0%	-3.4	+34%	-1%
	Not FSM (in last 6 years)	14	103.6	57%	7%	+0.3	-5%	+2%
FSM	Not FSM	15	103.4	60%	7%	+0.1	-2%	+1%
FSM Ever	FSM (ever)	1	100.5	100%	0%	-3.4	+34%	-1%
	Not FSM (ever)	14	103.6	57%	7%	+0.3	-5%	+2%
Term of Birth	Autumn Term	6	105.4	67%	17%	+1.0	-0%	+9%
	Spring Term	3	105.7	67%	0%	-1.6	-18%	-11%
	Summer Term	6	100.3	50%	0%	+0.0	+4%	-1%
SEN Group	SEN Support	4	104.1	25%	25%	+2.2	-25%	+18%
	EHC Plan	2	95.0	0%	0%	+0.3	-22%	-0%
	No SEN	9	104.9	89%	0%	-0.9	+12%	-6%
EAL	First language English	15	103.4	60%	7%	+0.1	-2%	+1%
Mobility	Joined before Y5	15	103.4	60%	7%	+0.1	-2%	+1%
Ethnicity	White	15	103.4	60%	7%	+0.1	-2%	+1%



Subjects

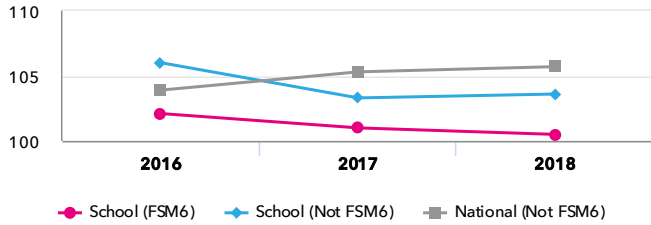
KS2 subject performance 2018

	Actual results			Pupil progress			Actual results over time		
	2016	2017	2018	2016	2017	2018			
Number of Pupils / % Matched	15	15	15	100%	93%	100%			
Reading									
% Expected standard+	73%	80%	87%	+10%	-6%	+13%	% Expected standard+ Reading chart 		
% Higher standard	13%	13%	13%	-3%	-11%	-10%			
Scaled Score	103	↑ 103	104	+2.2	-2.7	↓ +0.8			
Writing									
% Expected standard+	80%	80%	73%	+9%	-13%	-1%	% Expected standard+ Writing chart 		
% Higher standard	40% ⊕	33%	33%	+28% ⊕	+11%	+20% ⊕			
Scaled Score	105	104	103	+4.9 ⊕	-0.3	↓ +2.1			
Maths									
% Expected standard+	93%	87%	87%	+24%	-1%	+8%	% Expected standard+ Maths chart 		
% Higher standard	27%	0%	13%	+11%	-22%	-6%			
Scaled Score	106	103	102	+4.5 ⊕	-3.1	↓ -0.6			
Grammar, Punctuation & Spelling									
% Expected standard+	80%	93%	93%	+10%	+0%	+19%	% Expected standard+ Grammar, Punctuation & Spelling chart 		
% Higher standard	47% ⊕	20%	13%	+26% ⊕	-22%	-14%			
Scaled Score	107	106	106	+4.7 ⊕	-1.6	↓ +1.3			
Science									
% Expected standard+	100%	100%	100%	-	-	-	% Expected standard+ Science chart 		

Disadvantaged pupils

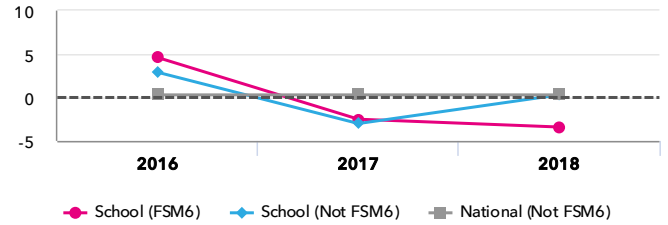
KS2 attainment for disadvantaged pupils 2018

Average Scaled Score (Re, Ma)



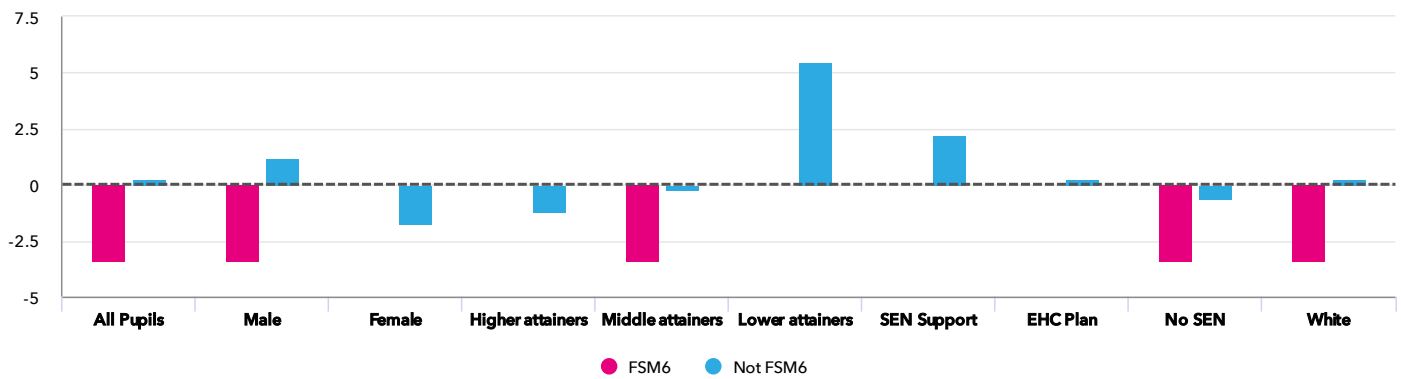
KS2 progress for disadvantaged pupils 2018

Average Scaled Score (Re, Ma)



Progress gap

Average Scaled Score (Re, Ma)



Attainment & progress

Pupils	Attainment			Progress					
	Average Scaled Score (Re, Ma)			Average Scaled Score (Re, Ma)					
	FSM6	Not FSM6	Gap	FSM6	Not FSM6	Gap			
Summary	All Pupils	1	14	100.5	103.6	-3.1	-3.4	0.3	-3.7
Gender	Male	1	10	100.5	102.4	-1.9	-3.4	1.2	-4.6
	Female	-	4	-	106.6	-	-	-1.7	-
DFE Prior Attainment	Higher attainers	-	4	-	107.8	-	-	-1.2	-
	Middle attainers	1	8	100.5	102.9	-2.4	-3.4	-0.2	-3.2
	Lower attainers	-	2	-	98.3	-	-	5.5	-
SEN Group	SEN Support	-	4	-	104.1	-	-	2.2	-
	EHC Plan	-	2	-	95	-	-	0.3	-
	No SEN	1	8	100.5	105.5	-5	-3.4	-0.6	-2.8
Ethnic Group	White	1	14	100.5	103.6	-3.1	-3.4	0.3	-3.7

Scatterplot

KS2 Pupil scatterplot 2018 15 pupils highlighted by Pupil Premium



Context

Context · Year 6 · 2017 / 2018

		Pupils	Proportion	
			School	National
Summary	All Pupils	15	100%	100%
Gender	Male	11	73%	51%
	Female	4	27%	49%
DFE Prior Attainment	Higher attainers	4	27%	31%
	Middle attainers	9	60%	55%
	Lower attainers	2	13%	9%
Pupil Premium	FSM (in last 6 years)	1	7%	30%
	Not FSM (in last 6 years)	14	93%	69%
FSM	Not FSM	15	100%	85%
FSM Ever	FSM (ever)	1	7%	31%
	Not FSM (ever)	14	93%	69%
Term of Birth	Autumn Term	6	40%	33%
	Spring Term	3	20%	32%
	Summer Term	6	40%	35%
SEN Group	SEN Support	4	27%	15%
	EHC Plan	2	13%	3%
	No SEN	9	60%	82%
EAL	First language English	15	100%	80%
Mobility	Joined before Y5	15	100%	93%
Ethnicity	White	15	100%	74%

Absence · Year 6 · Autumn 2014 - Summer 2017

		Pupils	Absence		Persistent absentees	
			School	National	School	National
Summary	All Pupils	15	4%	4%	7%	6%
Gender	Male	11	3%	4%	0%	6%
	Female	4	4%	4%	25%	5%
DFE Prior Attainment	Higher attainers	4	5%	3%	25%	2%
	Middle attainers	9	3%	4%	0%	6%
	Lower attainers	2	3%	6%	0%	14%
Pupil Premium	FSM (in last 6 years)	1	2%	5%	0%	12%
	Not FSM (in last 6 years)	14	4%	3%	7%	3%
FSM	Not FSM	15	4%	4%	7%	4%
FSM Ever	FSM (ever)	1	2%	5%	0%	11%
	Not FSM (ever)	14	4%	3%	7%	3%
Term of Birth	Autumn Term	6	5%	4%	17%	6%
	Spring Term	3	2%	4%	0%	6%
	Summer Term	6	3%	4%	0%	5%
SEN Group	SEN Support	4	5%	5%	25%	10%
	EHC Plan	2	3%	7%	0%	20%
	No SEN	9	3%	4%	0%	4%
EAL	First language English	15	4%	4%	7%	6%
Mobility	Joined before Y5	15	4%	4%	7%	5%
Ethnicity	White	15	4%	4%	7%	6%